

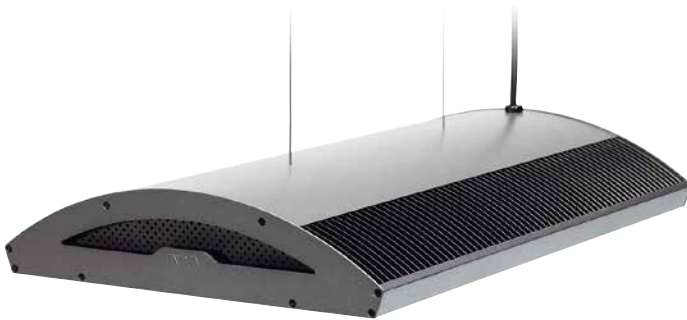
ADA NATURE AQUARIUM
NEW LIGHTING SYSTEM

SOLAR RGB II

Now Available

Our new flagship lighting model, Solar RGB II, is now available. By using the dedicated ADA CONTROLLER app, you can easily control the brightness and color temperature of the lighting via your smartphone. A new feature in the app, the <advanced mode>, allows for brightness adjustments tailored to different times of day. Additionally, the new <Group SYNC> enables simultaneous control of multiple "Solar RGB II" units, making it suitable for large aquariums as well. Even without the app, the system can be operated through simple methods such as the ON/OFF switch or the "NA Control Timer II".

Additionally, the Solar RGB II Dedicated Adapter Stand is also available. This stainless steel stand is designed to securely and correctly position the Solar RGB II AC adapter and control unit. Thanks to the high thermal conductivity of stainless steel, the stand efficiently dissipates heat generated by the AC adapter and control unit, ensuring optimal heat management.



Solar RGB II



**Solar RGB II
Dedicated Adapter Stand**

Specification

Input voltage / AC100~240V 50 / 60Hz

Rated Power / 180W

Power consumption / 135W ±10%

Illuminance / 0 to around 31,000 Lux ±10%
(Central illuminance at 30cm distance)

Color temperature / Around 9,000 ~ 12,000K

(There are variation in color temperature due to the nature of LED)

LED light / 170 (RGB LED)

LED lifetime / Over 30,000 hours

(Actual hours may vary depending on usage environment)

Operating temperature range / 0~35°C

*Please note that the lifespan of electronic components, including the AC adapter, may shorten depending on the operating environment (voltage, temperature, installation location) and usage time.

| Product Code | EAN Code | Product Name |
|----------------|----------------------|---------------------------------------------|
| 108-310 | 4537934083107 | Solar RGB II |
| 108-311 | 4537934083114 | Solar RGB II CE |
| 108-313 | 4537934083138 | Solar RGB II Dedicated Adapter Stand |