

MISTO

The LED Magnetic Plant Light

ColorFull LED Tailored for Plants
Discovering the Beauty of Plants - Beaming Up Beauty!

植
霧
光

Product Features

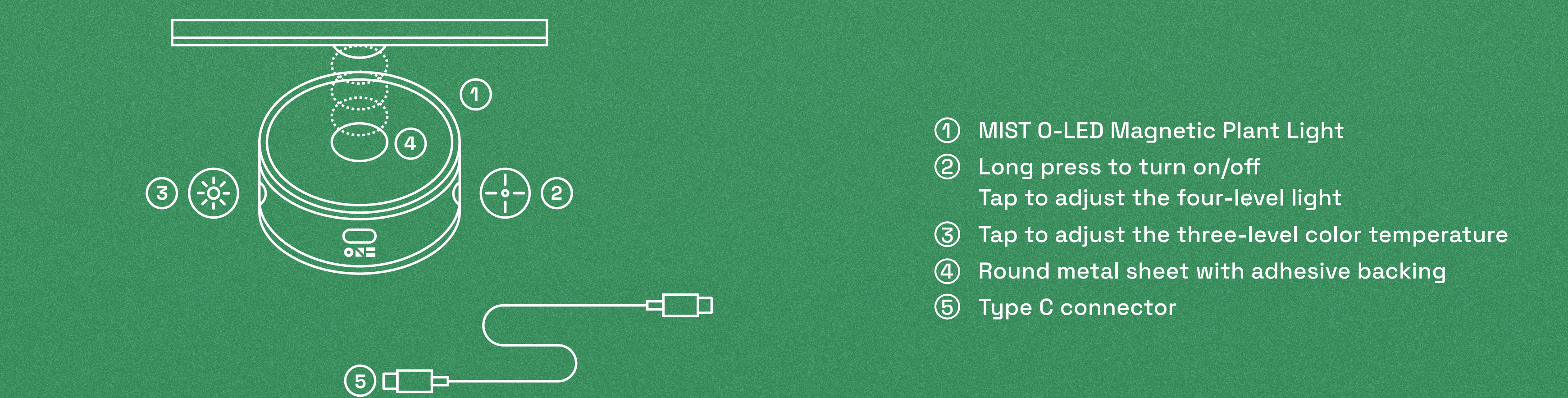
- The smallest O around function power-up: With years of experience in lighting for aquarium and terrestrial plants, a full range of functions is packed in the 88x27mm space. The magnetic feature extending the scope of use brings out the exuberance of the green indoor space.
- ONF High-saturation LED: Through exclusive technology, ONF ColorFull LED specially designed for plants combines the spectrum used by plants and visual comfort to integrate plant lighting into a high-quality home environment, making plants more vividly colorful and saturated.
- Indulging in magnetic suction everywhere, bringing plants into your life: Specially designed for table plants and featuring “magnetic suction everywhere,” the light has a built-in magnetic design. Stick the round magnet with adhesive backing provided by ONF on the light to install it on any cabinet or shelf.
- Precise light source control to save more power: MIST O-LED Magnetic Plant Light features built-in memory that records last O plant light built-in memory, including previous turn-off luminance and color temperature, etc. Connect to an external timer to save power, without having to make adjustment every time.
- Four-level light adjustment: The light adjustment design involves gradually adjusting light based on plant size, type, growth, and light demand, while keeping your eyes more comfortable. The optimum luminance is supplied to meet growth needs and promote plant growth.
- Three-level color temperature changes: It is the light of our nature to care for plants. Our original intentions of improving lighting texture remains unchanged. The color temperatures 2700K-4000K-7000K can be adjusted to complement the indoor environment or home lighting, thereby blending harmoniously into the home space.

Safety Precautions

- ⚠ Please read and follow all the safety descriptions before using the product.
- This product is intended for ornamental plants. It can also be used as a lamp for growing plants in small aquariums. Please install the product properly according to use.
- The product adopts the dimmer (gradual adjustment) mode to provide a better viewing experience and protect the eyes, allowing the eyes to gradually adapt.
- This product stores the last settings before turning off. The same setting will be used the next time the product is turned on.
- This product may not be used in water. Avoid accidentally dropping the product into water.
- If the body accidentally falls into water, remove the power plug first. Remove it from the water before checking the lamp to avoid electric shocks.
- In case of product malfunction, return the product to the dealer or apply for a repair from the sales platform. Do not open the product to repair it yourself, or the warranties do not apply.
- This product is specially designed for growing plants. Do not use it for other purposes.
- The upper part of the product is the LED heat dissipation area, which is normally around 50°C–60°C. Please be careful when touching it.
- Do not cover or wrap this product with combustible items such as paper and cloth.

Product Content

MIST O, Type C connector, round metal sheet with adhesive backing

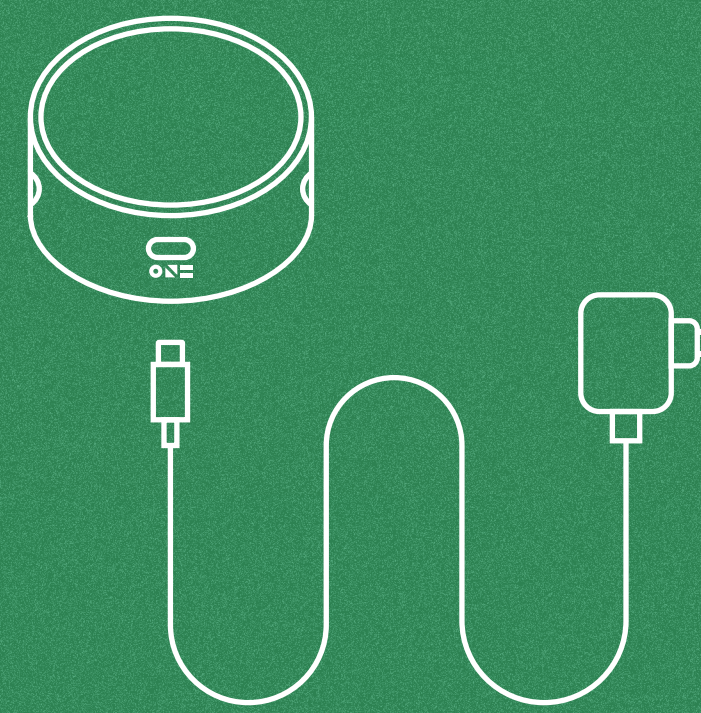


Installation Suggestions and Precautions

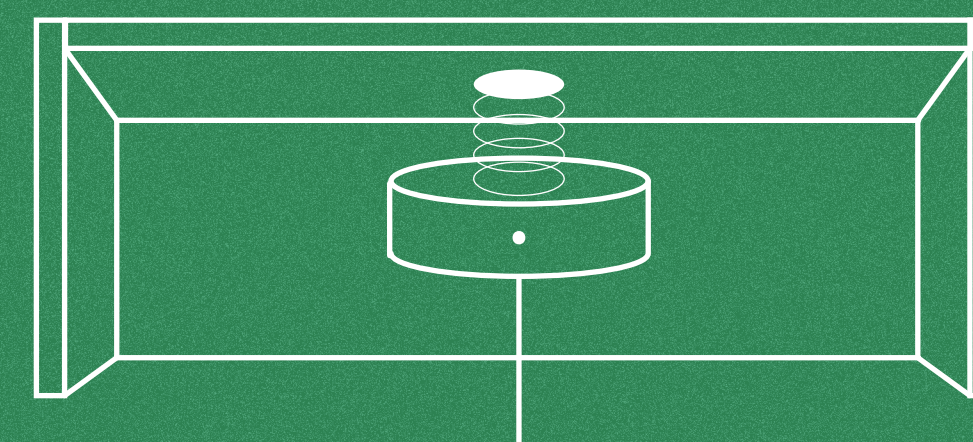
- ★ A 5V 2A USB C charger (including higher specifications) can be purchased separately to reach the normal luminance.
- ★ During installation, place the round magnet with adhesive backing in the middle and attach it to the center of the lamp for more stable adhesiveness. The gravitational force of the magnet is primarily vertical attraction. Therefore, horizontal displacement, if any, will weaken the magnetism.

Use in Iron Cabinets and Iron Shelves

1. Before installation, connect the Type C connector to the charger and plug it into the socket.



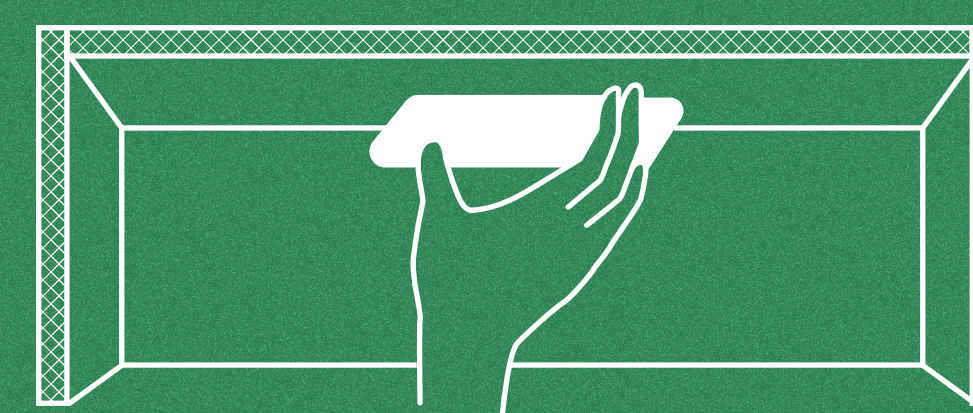
2. Verify the mount is complete before connecting the lamp and attaching it to the round magnet with adhesive backing. This installation approach will secure the lamp more firmly.



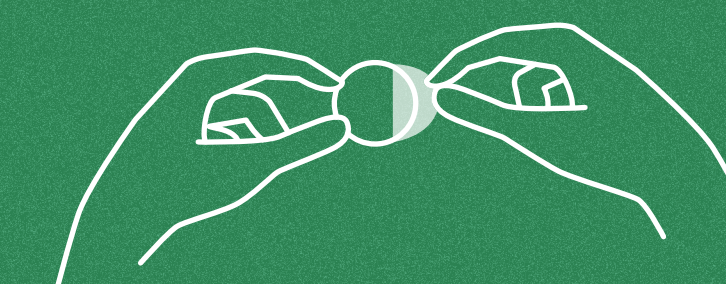
- Attaching MIST O to the metal sheet

Use in Wooden Shelves, Glass Shelves or Other Materials (A round magnet with adhesive backing is required)

1. When the lamp is used on a non-iron shelf, a round magnet with adhesive backing is required. First, wipe the adhesive site with alcohol. After drying, remove the blue protective film and the backing sticker. Stick the round magnet with adhesive backing on the cabinet or shelf where the lamp will be placed. In order to ensure adhesiveness, smooth it out and leave it in place for about 24 hours.



- Wipe your desired location with cleansing alcohol

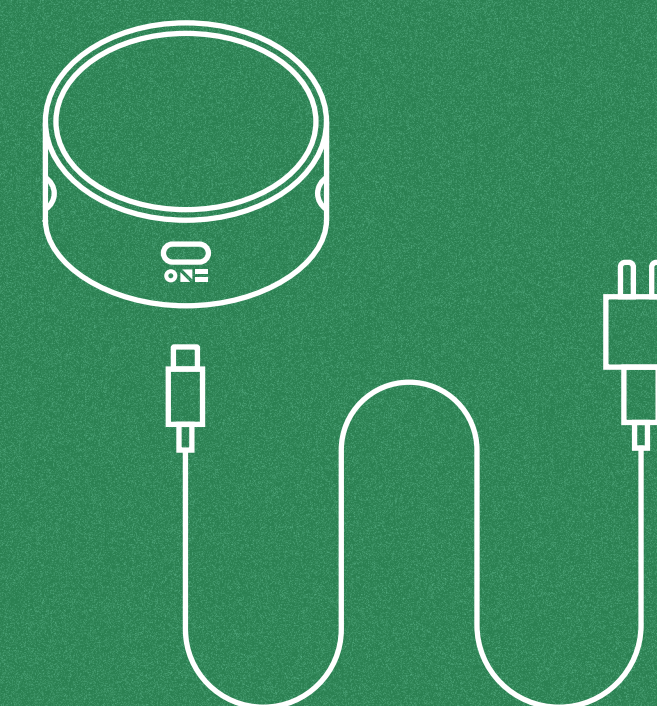


- Remove the blue protective film and protective backing from the metal sheet

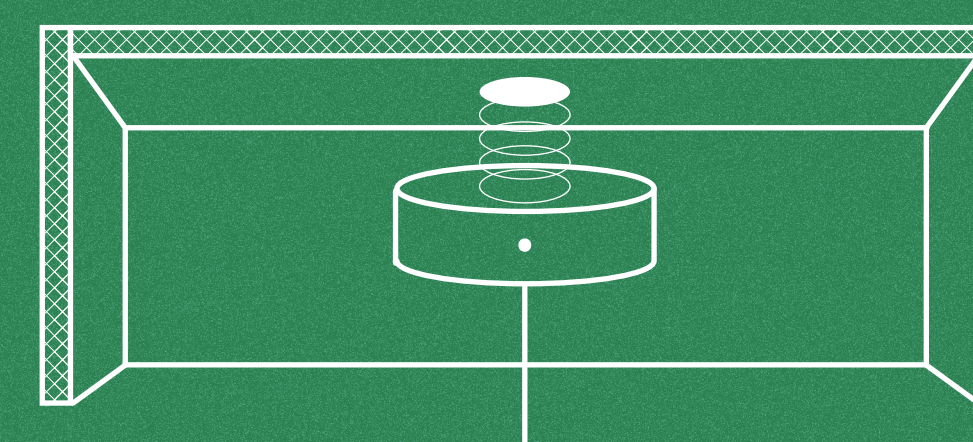


- Completely adhered for about 24 hours before attaching the MIST O

2. Before installation, connect the Type C connector interface to the 5V 2A USB Type C charger and plug it into the socket.



3. Verify the wire is mounted before connecting the lamp and attaching it to the round metal sheet with adhesive backing. This installation approach will secure the lamp more firmly.



- Attaching MIST O to the metal sheet

- ★ When mounting the wire, remove the lamp from the attached surface. Return the lamp to position after adjusting it. Avoid improper pulling that might cause the lamp to fall.
- ★ When adjusting luminance or light color, hold the light to make the adjustment, or remove the lamp from the surface before making the adjustment. Return the lamp to position after adjusting it.

Specifications

Product name	MIST O
Size	L88xW27 (mm)
Weight	125g
Color temperature	2700K-4000K-7000K
Luminous flux	500lm
Input voltage	DC 5V 2A
LED lifetime	50,000hr
Power consumption	10W
Beam angle	110°
IP	IP20
Operating temperature	0-40°C

Warranty

ONF (hereinafter our company) guarantees coverage for 1 year from the date of purchase. Our company provides free repair for manufacture defects tested and identified by the company. Overseas customers are required to pay freight for returning the product to the manufacturer (excluding warranties for any organisms or other matters. This warranty covers the body, excluding charging cables, lamp cover excluding charging cables).

This product warranty is valid under normal use. Damage due to failure to follow the safety precautions, accidents, misuse, etc., are excluded from coverage under this warranty. For inquiries, contact the customer service at: support@onf.com.tw

[➤ Product registration](#)